

# *Electrical & Ignition*

**Alternator**



- Housing Kit -  
Chrome Finish

42400 - GM 73-85 with Internal Regulator

**Alternator**



42402 - GM 1955-up Chrome 100 Amp

**Alternator**



42403 - Ford 1965-89 V6 & V8 Single Groove Chrome 100 amp

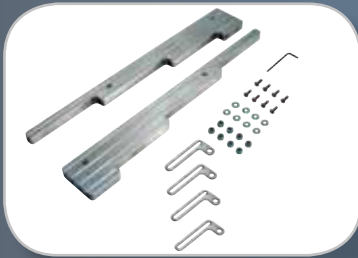
**Billet Style Wire Dividers**



- Polished Alloy Smooth -  
Suit most V8's with 9mm leads

4901 - Sold as Pair

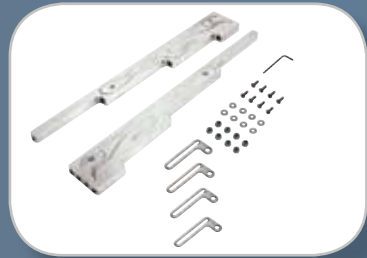
**Billet Style Wire Dividers**



- Polished Alloy Ball Milled -  
Suit most V8's with 9mm leads

4902 - Sold as Pair

**Billet Style Wire Dividers**



- Polished Alloy Flamed -  
Suit most V8's with 9mm leads

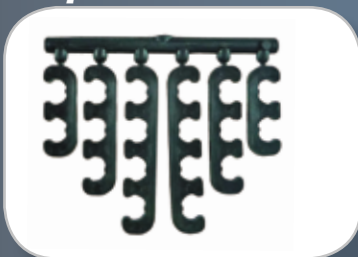
4903 - Sold as Pair

**Slider Style Wire Dividers**



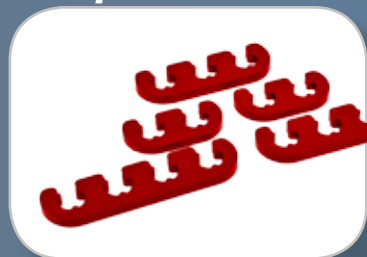
18483 - Adjustable mounting allows to fit most V8's including Chevrolet Centrebolt.  
Suits 5/16" (8mm) leads

**Wire Separators Standard**



4239 - Black 9/32" (7mm) Set  
4238 - Black 5/16" (8mm) Set

**Wire Separators Deluxe**



Suits 5/16" (8mm) or 1/32" (8.8mm) leads  
4601 - Black  
4602 - Red  
4606 - Blue  
4608 - Chrome

**Pro-Style Wire Separators**



Suits 9/32" (7mm), 5/16" (8mm) or 1/32" (8.8mm) leads

4631 - Black  
4632 - Red  
4636 - Blue  
4245 - Chrome

**High Performance Wire Separators**



- Set of 6 included -  
2x 2 Wire separators, 2x 3 Wire separators & 2x 4 Wire Separators  
43500 - Suit 11/32" (8.8mm) Cable Black  
43501 - Suit 9/8" (10mm) Cable Black

**Horizontal Separator Fitting Kits**



Does not include 43500 or 43501 separators  
43502 - Set of 6 Black

**Vertical Separator Fitting Kits**



Does not include 43500 or 43501 separators

**43503** - Set of 6 Black

**Distributor Hold Down**



- Chrome Steel -

**4229** - Chevrolet V8

**Distributor Hold Down**



- Chrome Steel -

**5760** - Chevrolet V8 Sm Blk Heavy Duty Competition Style

**Distributor Hold Down**



- Billet Alloy -

**5116** - Chevrolet V8 Sm Blk Polished Alloy

**Distributor Hold Down**



- Chrome Steel -

**5761** - Ford V8

**Distributor Hold Down**



- Chrome Steel -

**4629** - Ford Cleveland + "FE" Heavy Duty Competition Style

**Vacuum Advance Cover**



- Chrome Steel -

**1698** - Chrome Finish

**Ignition Wire Markers**



**4244** - Suit  $\frac{5}{16}$ " (8mm) leads. Sold as set

**Coil Bracket**



**4510** - Designed for GM vehicles with coil positioned vertically. OEM Style

**Coil Bracket & Cover Kit**



**4518** - Adjustable Bracket allows easy fit on most cylindrical coils

**Coil Bracket**



**4520** - Adjustable bracket allows easy fit on most cylindrical coils.

**Wire Clamps**



- Aluminium -  
Sold in sets of 4

- 41100** -  $\frac{3}{16}$ " (4.5mm) ID
- 41101** -  $\frac{1}{4}$ " (6mm) ID
- 41102** -  $\frac{5}{16}$ " (7.7mm) ID
- 41103** -  $\frac{3}{8}$ " (9.5mm) ID

**Convuluted Split Tubing**



- Chrome -

- 29518 - ID 1/4" (6mm). Length 10ft (3.0m)
- 29688 - ID 3/8" (9mm). Length 8ft (2.4m)
- 29768 - ID 1/2" (13mm). Length 6ft (1.8m)
- 29848 - ID 3/4" (19mm). Length 4ft (1.2m)

**Universal Wiring Harness**



44100 - Universal 20 Circuit Wiring Harness Colour Coded Wires and Instructions

**Timing Chain Cover Kit**



- Chrome Steel -

- 4235 - Sm Blk Chev. Kit with Gaskets & Oil Seal
- 42353 - Above with 12pt bolts & washers.

**Timing Chain Cover Kit**



- Polished Aluminium -

4935 - Sm Blk Chev

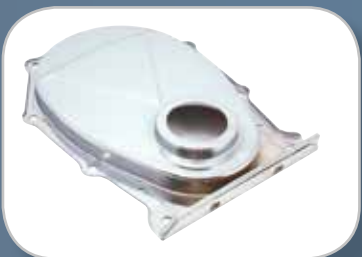
**Timing Cover**



- Chrome Steel -

4233 - Big Blk Chev

**Timing Cover**



- Chrome Steel -

4234 - Big Blk Chrysler

**Timing Cover & Water Pump Bolts**



9389 - Holden 6 Socket Heads

**Timing Cover & Oil Pan Bolts**



4691 - Kit 12 point Sm Blk Chev

**Timing Cover Bolts**



- Chrome Steel -

9788 - Kit Socket Head. Sm Block Chev

**Timing Cover Bolt Kits**



- Chrome Steel -

9801S - Kit Hex head. Sm Blk Chevrolet

**Timing Tab**



- Chrome Steel -

4236 - Sm Blk Chev Universal 6", 7" & 8" Balancers.

**Timing Tab**



- Chrome Steel -

4237 - Sm Blk Chev Adjustable 8" Balancer

4237A - Sm Blk Chev Adjustable 7" Balancer



**Timing Tab**



- Polished Aluminium -  
6042 - Sm Blk Chev Ball Milled.  
Suits 6" & 7" Balancers

**Timing Tab**



- Polished Aluminium -  
4936S - Sm Blk Chev Adjustable.  
Suit 6" & 7" Balancers

**Timing Tab**



- Chrome Steel -  
4241 - Big Blk Chev Adjustable  
8" Balancer

**Timing Tab**



- Polished Aluminium -  
8247 - Big Blk Chev Adjustable

**Timing Tab**



- Chrome Steel -  
4243 - Big Blk Chrysler



# Product Application



4244 Fitted to leads



4245 Fitted to leads



5760 Fitted



4947 & 14185 Fitted

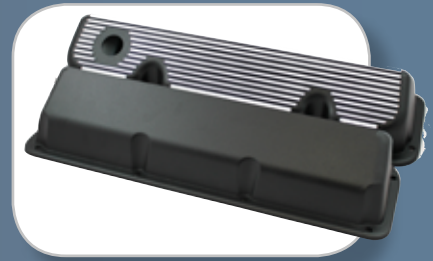
# We can help finish off the look in your engine bay with...



Round 14" Xtra Flow Filter



Round 14" Cotton Filter



Black Alloy Valve cover



Push In Oil Cap



Billet Water Neck



Heavy Duty Flex Fans



Radiator Hose Filter



Alternator Bracket  
Polished Alloy



Chrome Oil Pan

