

Engine Dress Up

Chevrolet



- Polished Alloy Smooth -
4996 - Small Block Low. 283-400 - Pair

Chevrolet



- Polished Alloy Smooth -
4999 - Small Block Tall. 283-400 - Pair
4999C - As Above in Chrome

Chevrolet



- Polished Alloy Smooth -
6152 - Small Block Tall. 283-400 - Pair

Chevrolet



- Chrome Steel Plain -
9216 - Small Block Low. 283-400 - Pair

Chevrolet



- Chrome Steel Plain -
9215 - Small Block Tall. 283-400 - Pair

Chevrolet



- Polished Fabricated Alloy -
Breather to suit part no. 40205
40200 - Small Block Tall. 283-400 with
rails - Pair

Chevrolet



- Chrome Fabricated Alloy -
40224 - Small Block Tall. 283-400 - Pair
with Rail

Chevrolet



- Polished Fabricated Alloy -
40212 - Small Block 283-400 with holes
& rails - Pair.

Chevrolet



- Polished Alloy Flamed -
4993S - Small Block Tall. 283-400 - Pair
4993C - As Above in Chrome

Chevrolet



- Polished Alloy Flamed -
6156 - Small Block Tall. 283-400 - Pair

Chevrolet



- Chrome Steel Flamed -
8215 - Small Block Tall. 283-400 - Pair

Chevrolet



- Chrome Steel -
Stamped with Painted Flames
40219 - Small Block 283-350 Tall

Chevrolet



- Polished Alloy Finned -
40901 - Small Block 283-400 Tall
(Oil Cap not included) - Pair
(Breather to suit part no. 40902)

Chevrolet



- Polished Alloy Ball Milled -
4997 - Small Block Low. 283-400 - Pair

Chevrolet



- Polished Alloy Ball Milled -
5000S - Small Block Tall. 283-400 - Pair
5000C - As Above in Chrome

Chevrolet



- Polished Alloy Ball Milled -
6154 - Small Block Tall. 283-400 - Pair

Chevrolet



- Chrome Steel Logo -
VC350 - "350" Logo Small Block Tall
 283-400 - Pair

Chevrolet



- Chrome Steel -
5260 - 1987-99 on Small Block Centre
 Bolt low 305-350 - Pair

Chevrolet



- Polished Alloy Plain -
4994 - 1987-99 on Small Block Centre
 Bolt Low 305-350 - Pair

Chevrolet



- Polished Fabricated Alloy -
40234 - LS1 with Coil Mounts

Chevrolet



- Polished Fabricated Alloy -
40235 - LS1 without Coil Mounts

Chevrolet



- Polished Alloy Plain -
40236 - LS1 without Coil Mounts

Chevrolet



- Black Finish -
40237 - Coil Mounts for LS1

Chevrolet



- Chrome Steel -
5240 - Big Block Low 396-502.
 1968-2000 - Pair

Chevrolet



- Chrome Steel Plain -
5230 - Big Block Tall 396-502
 1968-2000 - Pair

Chevrolet



- Polished Alloy Plain -
5011 - Big Block Tall 396-502
 1968-2000- Pair

Chevrolet



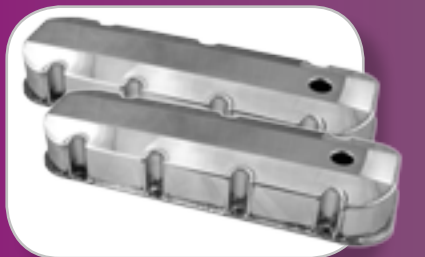
- Polished Fabricated Alloy -
 Breather suit part no. 40205
40201 - Big Block Tall 396-502 with
 Rails. 1968-2000 - Pair.

Chevrolet



- Polished Fabricated Alloy -
40215 - Big Block 396-502 with Rails &
 holes. 1968-2000 Pair

Chevrolet



- Polished Fabricated Alloy -
40216 - Big Block Tall 396-502 -
 with Rails. 1968-2000 - Pair

Chevrolet



- Chrome Fabricated Alloy -
40225 - Big Block Tall 396-502 -
 with Rails. 1968-2000 - Pair

Chevrolet



- *Chrome Fabricated Alloy* -
40226 - Big Block Tall 396-502 -
with Rails. 1968-2000 - Pair

Chevrolet



- *Chrome Steel Flamed* -
40220 - Big Block 396-502 Tall Baffled
(Embossed Flames). 1968-00 - Pair

Chevrolet



- *Chrome Steel Flamed -
Stamped with Painted Flames* -
40221 - Big Block 396-502 Tall Baffled.
1968-2000 - Pair

Chevrolet



- *Polished Alloy Flamed* -
50135 - Big Block Tall 396-502
1968-2000 - Pair

Chevrolet



- *Polished Alloy Ball Milled* -
50125 - Big Block Tall 396-502 1968-
2000 - Pair

Chevrolet



- *Polished Alloy Finned*-
40904 - Big Block Tall 396-502 1968-
2000 - Pair

Chrysler



- *Chrome Steel Plain* -
5244 - Slant Six 170 -198-225

Chrysler



- *Chrome Steel Plain* -
5274 - Small Block 273-318-340-360
1965-91 - Pair

Chrysler



- *Chrome Steel Plain* -
5277 - Big Block 361-383-400-413-
426-440 1965-91 - Pair

Ford



- *Chrome Steel Plain* -
5266 - 1960-80 6 Cyl 144-170-200-250

Ford



- *Chrome Steel Plain* -
9295 - Cleveland 302-351-400 - Pair

Ford



- *Chrome Steel Logo* -
VC351 - '351' Logo Cleveland 302-351-
400 - Pair

Ford



- *Polished Alloy Finned* -
40217 - Cleveland 302-351-400 - Pair

Ford



- *Black Alloy Finned* -
40218 - Cleveland 302-351-400 - Pair

Ford



- *Chrome Steel Plain* -
VC351TALL - Cleveland Tall
302-351-400 - Pair

Ford



- Polished Fabricated Alloy -
40214 - Ford Cleveland 302-351-400
 (no hole) - Pair

Ford



- Chrome Fabricated Alloy -
40231 - Ford Cleveland 302-351-400
 (no hole) - Pair

Ford



- Chrome Steel Plain -
9237 - Windsor 260-351 - Pair

Ford



- Polished Alloy Plain -
40228 - Windsor 260-351, Std Height.
 - Pair

Ford



- Polished Alloy Plain -
5018 - Windsor 260-351 - Pair
5018C - As Above in Chrome

Ford



- Polished Fabricated Alloy -
40202 - Windsor 260-351 no hole, with
 rails. - Pair

Ford



- Chrome Fabricated Alloy -
40230 - Windsor 260-351 with rails.
 - Pair

Ford



- Polished Fabricated Alloy -
40213 - Windsor 260-351 with rails.
 - Pair

Ford



- Polished Fabricated Alloy -
40232 - Windsor 260-351 with rails.
 - Pair

Ford



- Chrome Fabricated Alloy -
40233 - Windsor 260-351 with rails.
 - Pair

Ford



- Polished Alloy Ball Milled -
40229 - Windsor 260-351 Std Height.
 - Pair

Ford



- Polished Alloy Ball Milled -
5019 - Windsor 260-351 - Pair
5019C - As Above in Chrome

Ford



- Polished Alloy Finned -
40905 - Windsor 260-351 - Pair

Ford



- Polished Alloy Finned -
40227 - Windsor 260-351 - Pair

Ford



- Chrome Steel Flamed -
8237 - Windsor 260-351 - Pair

Ford



- Chrome Steel -
Stamped with Painted Flames
40222 - Ford Windsor 260-351 - Pair

Ford



- Polished Alloy Flamed -
5020 - Windsor 260-351 - Pair

Ford



- Chrome Steel Plain -
5265 - Windsor 5 ltr 1986-95 OEM
Style - Pair. Unbaffled

Ford



- Chrome Steel -
5264 - Big Block 429-460 - Pair

Ford



- Chrome Steel Plain -
5270 - "FE" 332-352-360-390-406-
410-427-428 - Pair

Holden



- Chrome Steel Plain -
VC186 - Red Motor 186-202 6cyl, 2
Hole Style

Holden



- Chrome Steel Logo -
VC202 - "202" Logo Red/Blue Motor
186-202, 6 cyl, 2 Hole Style

Holden



- Chrome Steel Plain -
VC202P - Blue/Black Motor 186-202
Motor 6 cyl, 3 hole Style

Holden



- Finned Polished Alloy -
VC186POL - 6 Cyl 186-202 Tall

Holden



- Finned Alloy Black -
VC186B - 6 Cyl 186-202 Tall

Holden



- Chrome Steel Plain -
VC308OE - "OEM" Style V8 253-308
Low - Pair

Holden



- Chrome Steel Plain -
VC308P - V8 253-308 Tall - Pair

Holden



- Chrome Steel Logo -
VC253 - "253" Logo V8 253-308 Tall, Pair

Holden



- Chrome Steel Logo -
VC308 - "308" Logo V8 253-308 Tall, Pair

Holden



- Polished Alloy Plain -
VC308POL - V8 253-308 Tall, Pair

Holden



- *Finned Alloy Black* -
VC308B - V8 253-308 Tall - Pair

Holden



- *Polished Alloy Finned* -
Left Bank Cutaway
40207 - Holden 5.0 Ltr V8 VN 1988 on

Holden



- *Black Alloy Finned* -
Left Bank Cutaway
40206 - Holden 5.0 Ltr V8 VN 1988 on

Holden



- *Black Alloy Finned* -
No Cutaway
40208 - Holden 5.0 Ltr V8 VN 1988 on

Holden



- *Black Alloy Finned* -
No Oil cap Recess, No PCV Outlets Drilled
40210 - Holden 5.0 Ltr V8 VN 1988 on



Holden



- *Chrome Steel* -
9342 - Holden 6 Side Plates -Set of 2

Holden



- *Alloy Finned* -
9342POL - Holden 6 Side Plates.
 Polished Alloy finish, Set of 2
9342BLK - Holden 6 Side Plates.
 Black Alloy finish Set of 2

Holden



- *Chrome Socket Head* -
6776 - Side Plate Bolts - Set
 To suit 9342 only.

Push In Oil Cap



- *Chrome Steel* -
4277 - 1"(25mm) Neck with Internal Baffle.
 Suit 1 1/4"(32mm) Filler Holes
4276 - As above with Grommet

Push In Oil Cap



- *Chrome Steel* -
4300 - 3/4"(19mm) Neck with Internal
 Baffle Suit 1 1/4"(32mm) Filler holes
4299 - As above with Grommet



Push In Oil Cap



- *Flamed Chrome Steel* -
8870 - 1"(25mm) Neck with Internal Baffle. Suit 1 1/4"(32mm) Filler Holes

Push In Oil Cap



- *Painted Flame Chrome Steel* -
8870X - 1"(25mm) Neck with Internal Baffle. Suit 1 1/4"(32mm) Filler Holes

Push In Oil Cap



- *Polished Alloy Flamed* -
4907 - 1"(25mm) Neck, Suit 1 1/4"(32mm) Filler Holes
4907C - As Above - Chrome Finish

Push In Oil Cap



- *Chrome Steel* -
1738 - Suit 1 1/4"(32mm) Filler Holes

Push In Oil Cap



- *Billet O-Ring* -
17385 - Suit 1 1/4"(32mm) Filler Holes

Push In Oil Cap



- *Billet 2 Piece Design* -
42775 - Billet 2 Piece Design. 1"(25mm) Neck with Internal Baffle. Suit 1 1/4"(32mm) Filler Holes

Push In Oil Cap



- *Polished Alloy Plain* -
4919 - 1"(25mm) Neck, Suit 1 1/4"(32mm) Filler Holes
4919C - As Above - Chrome Finish

Push In Oil Cap



- *Chrome Steel Louvered* -
7190 - 1"(25mm) Neck Suit 1 1/4"(32mm) Filler Holes

Push In Oil Cap



- *Polished Alloy Ball Milled* -
4920 - 1"(25mm) Neck, Suit 1 1/4"(32mm) Filler Holes
4920C - As Above - Chrome Finish

Push In Oil Cap



- *Polished Alloy Ball Milled* -
40902 - 1"(25mm) Diameter Neck without PCV, Suit 1 1/4"(32mm) Filler Holes
40903 - As above with PCV Breather

Push In Oil Cap



- *Satin Alloy Finned* -
40907 - 1"(25mm) Diameter Neck without PCV, Suit 1 1/4"(32mm) Filler Holes
40908 - As above with PCV Breather

Push In Oil Cap



- *Polished Alloy Plain* -
4909 - 1"(25mm) Diameter Neck, Suit 1 1/4"(32mm) Filler Holes

Push In Oil Cap



- *Satin Alloy Finned* -
40909 - 1"(25mm) Diameter Neck,
 Suit 1 1/4"(32mm) Filler Holes

Push In Oil Cap



- *Chrome Steel with Tube* -
4279 - 1"(25mm) Neck with Internal
 Baffle & 5/8" tube.
 Suit 1 1/4"(32mm) Filler Holes
4278 - As above with Grommet

Push In Oil Cap with PCV



- *Chrome Steel* -
4284 - 3/4"(19mm) Neck with Internal
 PCV Valve.
 Suit 1 1/4"(32mm) Filler Holes
4290 - As above with Grommet

Push In Oil Cap with PCV



- *Billet O-Ring* -
42845 - Billet 2 Piece Design. Smooth
 with 3/4"(19mm) Neck &
 Internal PCV Valve.
 Suit 1 1/4"(32mm) Filler Holes

Push In Oil Cap with PCV



- *Polished Alloy Plain* -
4921 - 1"(25mm) Neck. filler holes with
 built in PCV.
 Suit 1 1/4"(32mm)

Push In Oil Cap with PCV



- *Polished Alloy Ball Milled* -
4922 - 1"(25mm) Neck. Filler Holes with
 built in PCV. Suit 1 1/4"(32mm)

Push In Oil Cap with PCV



- *Polished Alloy Flamed* -
4906 - 1"(25mm) Neck. Filler Holes with
 built in PCV. Suit 1 1/4"(32mm)

Push In Oil Cap



- *Chrome Steel with Tube* -
9169 - 1"(25mm) Neck & 5/8"(16mm)
 Tube for PCV Hose.
 Suit 1 1/4"(32mm) Filler Holes

Push In Oil Cap



- *Chrome Steel* -
 Fits 1/4"(32mm) Valve Cover holes,
 3"(76mm) Tall supplied with Grommets
42851 - Black Filter
42852 - Red Filter
42856 - Blue Filter
42859 - White Filter

Push In Oil Cap



- *Chrome Steel* -
4285A - Fits 1 1/4"(32mm) Valve Cover
 Holes, 2"(51mm) Tall Red Filter

Push In Oil Cap



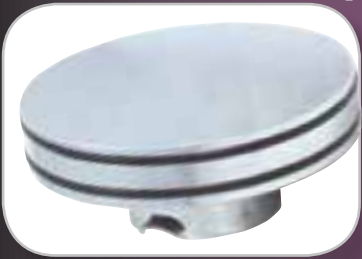
- *Chrome Steel* -
42869 - Fits 1 1/4"(32mm) Valve Cover
 Holes, 3"(76mm) Tall

Twist In Oil Cap



- *Chrome Steel* -
4310 - Holden, Twist In

Twist In Oil Cap



- Billet O-Ring -

43105 - Holden, Twist In

Twist In Oil Cap



- Chrome Steel -

2684 - Holden Twist In

Twist In Oil Cap



- Chrome Steel -

4273 - Holden Twist In

Twist In Oil Cap



- Chrome Steel -

4274 - Holden Twist On. Allows PCV Valve to fit into top

Twist In Oil Cap



- Chrome Steel -

4281 - Chrome Steel

Twist In Oil Cap



- Chrome Steel -

4281A - Chrome Steel with side Tube

Twist In Oil Cap



- Chrome Steel -

4280 - Chrome Steel, Clip In

Screw In Oil Cap



- Chrome -

4320 - Fits 87-94 Chevrolet

Clamp On Oil Cap



- With Shield -

4282A - 1 1/2" [38mm] Neck Clamp On
4282C - 1 3/8" [35mm] Neck Clamp On

Clamp On Oil Cap



4282 - 1 1/2" [38mm] Neck Clamp On
4282B - 1 3/8" [35mm] Neck Clamp On

Mini Breather



3991 - Black 3/8" [9mm] ID Neck
3991A - Black 15/32" [12mm] ID Neck
3991B - Black 45/64" [18mm] ID Neck
3991C - Black 1" [25mm] ID Neck

Mini Breather



3996 - Blue 3/8" [9mm] ID Neck
3996A - Blue 15/32" [12mm] ID Neck
3996B - Blue 45/64" [18mm] ID Neck
3996C - Blue 1" [25mm] ID Neck

Mini Breather



- 3992 - Red $\frac{3}{8}$ "(9mm) ID Neck
- 3992A - Red $\frac{15}{32}$ "(12mm) ID Neck
- 3992B - Red $\frac{45}{64}$ "(18mm) ID Neck
- 3992C - Red 1"(25mm) ID Neck

Mini Breather



- 3998 - Chrome $\frac{3}{8}$ "(9mm) ID Neck
- 3998A - Chrome $\frac{15}{32}$ "(12mm) ID Neck
- 3998B - Chrome $\frac{45}{64}$ "(18mm) ID Neck
- 3998C - Chrome 1"(25mm) ID Neck

Oil Cap Kit



- Polished Alloy Cap -
Universal bolt on or weld on mounting
- 40223 - Bung with Cap

PCV Valve



- Polished Alloy -
- 4924 - $\frac{3}{4}$ "(19mm) outside diameter neck

PCV Valve



- 4298 - Replacement PCV Valve

PCV Valve



- 4297 - Replacement PCV Valve

Oil Filler Tube



- 7394 - Chev V8 in Chrome

Crankcase Evacuation kit



- 40700 - Kit

Oil Cap Grommet



- Fits $\frac{1}{4}$ "(32mm) ID Filler Holes, 1"(25mm) OD Neck Breather.
- Baffled Design Prevents Breather Oil Splash
- 5331 - 1 Grommet
- 5332 - 2 Grommets

Oil Cap Grommet



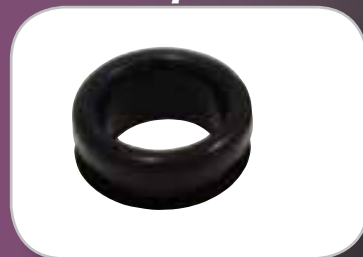
- Fits $\frac{1}{4}$ "(32mm) ID Filler Holes, 1"(25mm) OD Neck Breather
- 5341 - 1 Grommet
- 5342 - 2 Grommets
- 4878B - Bulk Unpacked

Oil Cap Grommet



- Fits $\frac{1}{4}$ "(32mm) ID Filler Holes, 1"(25mm) OD Neck Breather
- 5334 - 1 Grommet
- 5334B - Bulk Unpacked

Oil Cap Grommet



- To suit Alloy Valve Covers -
- 41900 - $\frac{3}{4}$ "(19mm) ID
- 41901 - $\frac{15}{16}$ "(24mm) ID

Combination Grommet



For 1/4"(32mm) ID filter holes

5339 - Set of 2. Includes [1x] 3/4" ID Grommet & [1x] 1"(25mm) ID Grommet

Combination Grommet



For 1/4"(32mm) ID filter holes

5333 - Set of 2. Includes [1x] 3/4" ID Grommet & [1x] 1"(25mm) ID Grommet

PCV Grommet



Fits 1/4"(32mm) Filler Holes. 3/4"(19mm) ID of Grommet.

Baffled Design Prevents Breather Oil Splash

5330 - 1 Grommet
5329 - 2 Grommets
5330B - Bulk Unpacked

PCV Grommet



Fits 1/4"(32mm) Filler Holes. 3/4"(19mm) ID of Grommet.

5337 - 1 Grommet
5343 - 2 Grommets
4998B - Bulk Unpacked

PCV Grommet



- Ford -

Fits Ford 1"(25mm) Hole with 3/4"(19mm) PCV

5336 - 1 Grommet 3/4" ID
5345 - 2 Grommet 3/4" ID

PCV Grommet



- Ford -

Fits Ford Windsor factory Valve Covers
41902 - 1 Grommet - D Shape

PCV Grommet



- Ford -

Fits Ford Cleveland factory Valve Covers
41903 - 1 Grommet

PCV Grommet



- Holden -

Fits Holden factory valve covers with PCV

5327 - 1 Grommet
5328 - 2 Grommets
5327B - Bulk Unpacked

Grommet Cover



- Polished Aluminium -

Suits Standard Chrome / Alloy Aftermarket valve covers

7235 - 3/4"(19mm) ID - 1 1/4"(32mm) OD
7236 - 1"(19mm) ID - 1 1/4"(32mm) OD

Valve Cover Tabs



- Chrome Steel -

5324 - Mini Tabs Set 8

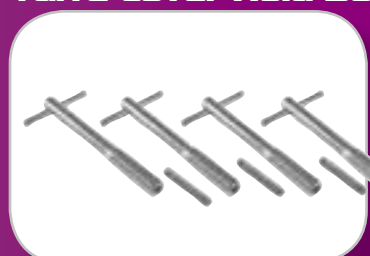
Valve Cover Tabs



- Chrome Steel -

5321 - Spreader Bars set 4

Valve Cover Hold Downs



- Chrome Steel -

5298 - 3/4"(95mm) T-Bar Set 4

Valve Cover Hold Downs



- Billet O-Ring -
52985 - 4" (102mm) O-Ring Set 4

Valve Cover Hold Downs



- Chrome Steel -
5308 - 5" (127mm) T-Bar Set 4

Valve Cover Hold Downs



- Chrome Steel -
5320 - 4" (102mm) O-Ring Set 4

Valve Cover Hold Downs



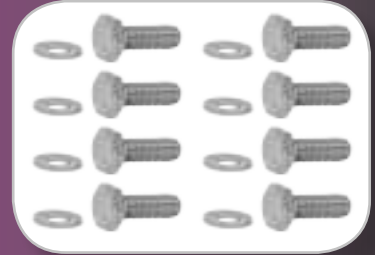
- Chrome Steel -
5326 - Accorn + Stud Kit - Set 4

Valve Cover Bolts



- Chev Small Block 283-400 -
Chrome Socket Head
8758 - Alloy Valve Cover Set
8758L - Alloy Valve Cover Set suit thicker valve covers
8759 - Steel Valve Cover Set

Valve Cover Bolts



- Chev Small Block 283-400 -
Chrome Hex Head
9840S - Sm Blk Chevrolet. To suit Alloy Valve Covers

Valve Cover Bolts



- Ford Crossflow -
Chrome Socket Head
8757 - Steel Valve Cover Set

Valve Cover Bolts



- Ford Cleveland 302-400 -
Chrome Socket Head
8754T - Alloy Valve Cover Set
8754L - Alloy Valve Cover Set suit thicker valve covers
8755 - Steel Valve Cover Set

Valve Cover Bolts



- Ford Windsor 260-351 -
Chrome Socket Head
8760 - Alloy Valve Cover Set
8760L - Alloy Valve Cover Set suit thicker valve covers
8761 - Steel Valve Cover Set

Valve Cover Bolts



- Holden 6 -
Chrome Socket Head
8752T - Alloy Valve Cover Set
8753 - Steel Valve Cover Set

Rocker Cover Bolts



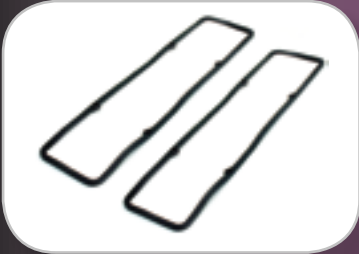
- Holden VB, Pre EFI -
Chrome Socket Head
8750 - Alloy Valve Cover Set
8750L - Alloy Valve Cover Set suit thicker valve covers
8751T - Steel Valve Cover Set

Valve Cover Bolts



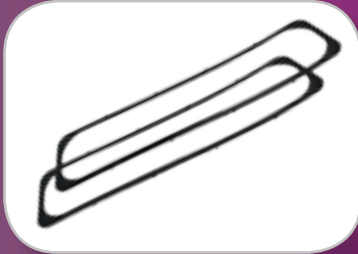
- Chrome Socket Head -
9782 - 1/4" - 20 x 1/2" Set of 4
9434 - 1/4" - 20 x 3/4" Set of 4
9435 - 1/4" - 20 x 1" Set of 4

Valve Cover Gasket



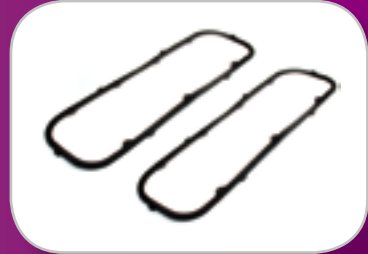
- Rubber with Steel Shim -
MAG350G - Chev Sm Blk - Pair

Valve Cover Gasket



- Rubber with Steel Shim -
MAG350GL - Chev Centrebolt - Pair

Valve Cover Gasket



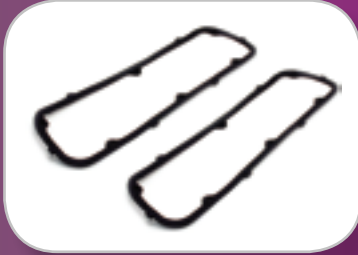
- Rubber with Steel Shim -
MAG454G - Chev Big Block - Pair

Valve Cover Gasket



- Rubber with Steel Shim -
MAG351G - Ford Cleveland V8 - Pair

Valve Cover Gasket



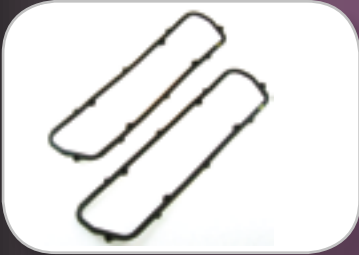
- Rubber with Steel Shim -
MAG302G - Ford Windsor V8 - Pair

Valve Cover Gasket



- Rubber with Steel Shim -
MAG186G - Holden 6

Valve Cover Gasket



- Rubber with Steel Shim -
MAG308G - Holden V8 - Pair



**Keep Up To Date
With Our New
Products Online
www.naparts.com.au**

