

Under Car Catalogue



Warning

The fitment of products in this catalogue may contravene State or Federal Regulations. Please consult with the relevant authorities before fitment.

We recommend that all products be fitted by a qualified Automotive Engineer.

Important Notice

The information gathered in this Catalogue comes from many sources over the years. It should be treated **as a guide only**. Models can vary from month to month with manufacturers. We recommend measuring and checking sizing before ordering.

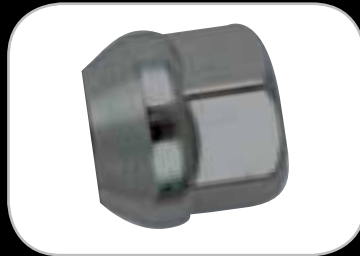
Wheel Nuts



- Acorn Open Ended -
OEM Replacement

- 55-000 - 7/16"
- 55-001 - 1/2"
- 55-002 - 12mm x 1.25"
- 55-003 - 12mm x 1.5"

Wheel Nuts



- Acorn Bulge Open Ended -

- 55-202 - 12mm x 1.25"
- 55-203 - 12mm x 1.5"
- 55-205 - 14mm x 1.5"

Wheel Nuts



- Acorn Nut -

- 55-400 - 7/16"
- 55-401 - 1/2"
- 55-402 - 12mm x 1.25"
- 55-403 - 12mm x 1.5"

Wheel Nuts



- Bulge Chrome Nut -

- 55-800 - 7/16"
- 55-801 - 1/2"
- 55-802 - 12mm x 1.25"
- 55-803 - 12mm x 1.5"
- 55-805 - 14mm x 1.5"

Wheel Nuts



- Bulge Black Nut -

- 56-000 - 7/16"
- 56-001 - 1/2"
- 56-002 - 12mm x 1.25"
- 56-003 - 12mm x 1.5"
- 56-005 - 14mm x 1.5"

Wheel Nuts



- Bulge Nut Long -

- 56-201 - 1/2"
- 56-203 - 12mm x 1.5"
- 56-205 - 14mm x 1.5"

Wheel Nuts



- Socket Acorn -

- 56-400 - 7/16"
- 56-401 - 1/2"
- 56-402 - 12mm x 1.25"
- 56-403 - 12mm x 1.5"
- 56-406 - Key to Suit

Wheel Nuts



- Mag Nut Short -
(Convo Pro Style) Open End

- 57-000 - 7/16"
- 57-001 - 1/2"
- 57-003 - 12mm x 1.5"
- 64-000 - Washer

Wheel Nuts



- Mag Nut Short -
(Convo Pro Style) Open End

- 57-200 - 7/16"
- 57-201 - 1/2"
- 57-203 - 12mm x 1.5"
- 64-000 - Washer

Wheel Nuts



- Mag Nut Standard -
Open Ended

- 57-400 - 7/16"
- 57-401 - 1/2"
- 57-402 - 12mm x 1.25"
- 57-403 - 12mm x 1.5"
- 64-000 - Washer

Wheel Nuts



- Mag Nut Standard -
Closed Ended

- 57-600 - 7/16"
- 57-601 - 1/2"
- 57-602 - 12mm x 1.25"
- 57-603 - 12mm x 1.5"
- 64-000 - Washer

Wheel Nuts



- Mag Nut Extra Long -
Open Ended

- 57-800 - 7/16"
- 57-801 - 1/2"
- 57-802 - 12mm x 1.25"
- 57-803 - 12mm x 1.5"
- 63-000 - Washer

Wheel Nuts



- Mag Nut Standard -
Closed Ended

- 58-000 - 7/16"
- 58-001 - 1/2"
- 58-002 - 12mm x 1.25"
- 58-003 - 12mm x 1.5"
- 63-000 - Washer

Accessories



- Washer Standard -
64-000 - Wheel Spacer Washer

Accessories



- Washer Extra Thick -
63-000 - Wheel Spacer Washer

Tail Shaft Loop



4140 - Universal drive shaft safety loop.
Zinc plated

Engine Mount Adaptors



EM350 - Allows Chevrolet V8 to be fitted
into HQ-WB Holden, LC-UC
Torana & Commodore VB-VS

Block Hugger Headers



40500 - Fits SB Chevy 265-400. Fits
regular or slant plug heads
(8mm flange & reducer)
Tube diameter 1 11/16" with
3/32" thick material. Includes
collector reducers, gaskets &
header bolts. Chrome Finish
40501 - As above, Black Finish

U-Bolts with Nuts



Sold in Packs of 2. U-Bolts are flat stamped & formed to stop movement on diff housing.
Nuts are Flanged and self-locking

	ID	Thread	Length
UB57 -	57mm	12mm	260mm
UB65 -	65mm	12mm	260mm
UB75 -	75mm	12mm	260mm
UB75X14 -	75mm	14mm	260mm
UB85 -	85mm	12mm	260mm
UB85x14 -	85mm	14mm	260mm

U-Bolt Nuts Only



- Flanged Self-locking Nuts -
NUT12 - 12mm - Pack 8
NUT14 - 14mm - Pack 8

Longer lengths are available — contact our office for more information

Wheel Spacer



- 4 Studs -

	Inner ID	Outer ID	Thickness
7105	70mm	150mm	3mm
7104	70mm	150mm	5mm
7106	70mm	150mm	8mm
7102	70mm	150mm	12mm

Wheel Spacer



- 5 Studs -

	Inner ID	Outer ID	Thickness
8080	81mm	151mm	8mm
8077	90mm	163mm	3mm
8081	90mm	163mm	5mm
8082	90mm	163mm	8mm
8075	90mm	163mm	12mm

Wheel Spacer

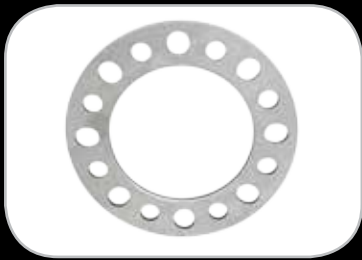


- 6 Studs -

	Inner ID	Outer ID	Thickness
8078*	108mm	175mm	6mm
7107	106mm	175mm	6mm
7103	108mm	175mm	12mm

8078 can be used for 5 & 6 Stud

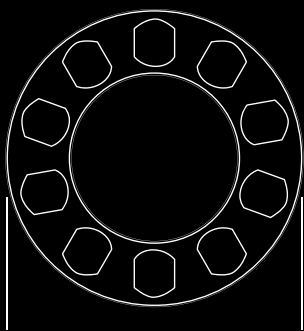
Wheel Spacer



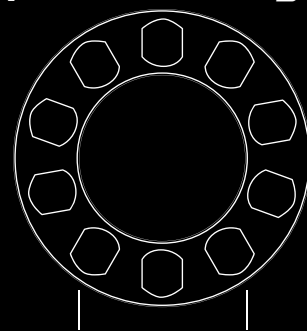
- 8 Studs -

	Inner ID	Outer ID	Thickness
7108	124mm	205mm	8mm

Wheel Spacer Anatomy



Outer Diameter



Inner Diameter



Thickness

Extra Long Wheel Studs



***Denotes Knurl is away from Head of stud*

- 72mm Length -

Quantity Per Part Number: 1x

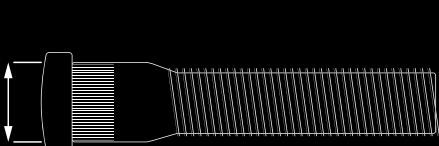
	Thread	Knurl Diameter	Shoulder Length
42001	7/16"-20R	12.15mm	12.7mm
42002	7/16"-20R	14.4mm	10.7mm
42003	1/2"-20R	15.7mm	13.4mm
42004	1/2"-20R	15.7mm*	23.4mm
42005	M12x1.50	14.3mm*	25.8mm
42006	M12x1.50	14.1mm	11.2mm
42007	M12x1.50	12.8mm	9.5mm
42008	M12x1.50	13.3mm	12.0mm
42009	M12x1.25	12.5mm	15.3mm

- 72mm Length -

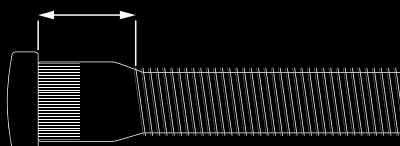
Quantity Per Part Number: 5x

	Thread	Knurl Diameter	Shoulder Length
42101	7/16"-20R	12.15mm	12.7mm
42102	7/16"-20R	14.4mm	10.7mm
42103	1/2"-20R	15.7mm	13.4mm
42104	1/2"-20R	15.7mm*	23.4mm
42105	M12x1.50	14.3mm*	25.8mm
42106	M12x1.50	14.1mm	11.2mm
42107	M12x1.50	12.8mm	9.5mm
42108	M12x1.50	13.3mm	12.0mm
42109	M12x1.25	12.5mm	15.3mm

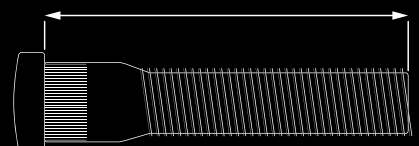
Extra Long Wheel Stud Anatomy



Knurl Diameter



Shoulder



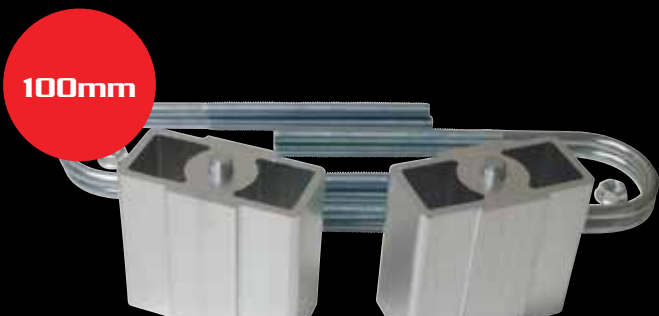
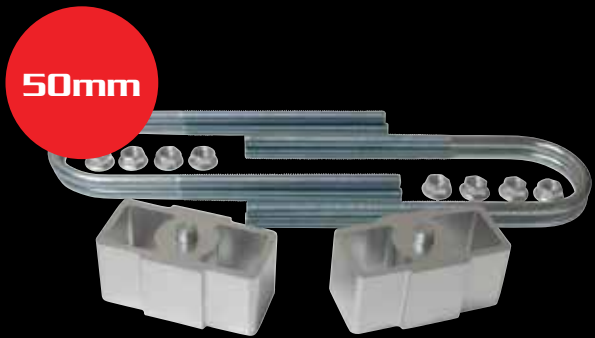
Length

Lowering Block Kits

Large Range Available, with Models being added regularly

Available in 25mm, 40mm, 50mm, 63mm, 75mm and 100mm

- Designed to Lower Frame and Body
- Billet Style 6063 Aluminium
- Fits most vehicles with Leaf Springs
- Easy to Install, no Special Tools Required
- Includes 4 Zinc Plated U-Bolts and Serrated Nuts



Lowering Block Kits



Features

- Aluminium Billet 6063
- Includes 4 Zinc Coated U-Bolts and Serrated Nuts

How to Order

Add Size e.g. (25, 40, 50, 63, 75 or 100) into the Part No, where it says ** in the listing below. E.g. LB13** to order 25mm kit, the part number is LB1325.

Sizes Available:

25mm = 1"	50mm = 2"	75mm = 3"
40mm = 1 1/2"	63mm = 2 1/2"	100mm = 4"

Ford

LB13**65	Capri
LB13**	Courier
LB13**	Econovan
LB24**65	Escort/Cortina early to 1970 MK1
LB13**65	Escort late 1970 onwards MK2
LB13**65	Falcon XK-XP 6 Cylinder
LB32**	Falcon XR-XF 6 Cylinder
LB36**	Falcon XR-XF 8 Cylinder
LB3236**	Falcon EA-EF and XG-XH Ute, Van and Wagon (14mm U-Bolts)
LB3236**	Falcon AU on Ute/Table Top and Wagon (14mm U-Bolts)
LB3236**75	Falcon EA-EF and XG-XH Ute, Van and Wagon (12mm U-Bolts)
LB3236**75	Falcon AU on Ute/Table Top and Wagon (12mm U-Bolts)

(NOTE: 25mm limit to lower if fitted with 16" wheels)

Holden

LB19**	Commodore VY 1 Tonner with 19mm locating pin
LB16**	Commodore Crewmen Ute
LB25**	FX to HD 1948-1965
LB13**	HR to WB 1966 on (If New or Rest springs fitted, lower hole in block may need to be drilled to 14mm. Disregard original nuts and bolts, and fit U-Bolts supplied). (HQ Sedan/Wagon has coil springs, so cannot be fitted with lowering blocks)
LB1316**85	Rodeo without 12mm locating pin
LB12**	Rodeo with 12mm locating pin

Mazda

LB25**	Most Mazda Sedans (All models except RX series should be 24mm locating pin, check differential housing locating pin size, before fitment)
--------	---

Mitsubishi

LB13**85	Challenger 4WD
LB25**	Galant, Sigma
LB13**	Lancer LA, LB
LB25**	Lancer LC
LB14**	L300 Commercial
LB14**85	Triton Ute 2WD & 4WD (Check Diff Housing to ensure uses round U-Bolts)
LB13**	Valiant All Models

Nissan

LB1316**65	1200/120Y Sedan, Coupe & Ute
LB13**65	180B/200B Wagon
LB1316**	620/720 2WD & 4WD
LB1316**85	Navara 2WD & 4WD

Toyota

LB25**65	All Sedans with Borg Warner Diff (The diff has a removable rear cover plate)
LB13**65	All Sedans with Japanese Diff (The diff has no cover plate)
LB14**	Commercials with 14mm Locating Pin
LB16**	Commercials with 16mm Locating Pin
LB19**	Commercials with 19mm Locating Pin
LB21**	Commercials with 21mm Locating Pin

For all Toyota Models please check Diff Locating Pin/Eyebolt size before ordering)

Valiant

LB13**	All Models
--------	------------

Many Sets are made to order, and are Non-Returnable. Any Size of 75mm to 100mm is for display use only.

The fitment of Lowering Block Kits may contravene State, Federal or Local Laws please contact the relevant authorities before fitment. The fitment of Lowering Blocks to a vehicle should only be done by a qualified automotive mechanic or engineer.

Application Guide

MAKE	MODEL	YEAR	COMMENTS	TOP PIN	BOTTOM PIN	U BOLT
CHRYSLER	SV1, AP5, AP6, VC, VE, VF, VG, VH, VJ, VK, CL, CM	1962-1981		13	13	75x12mm
	Galant GA, GB, GC, GD	1971 to 1977		25	25	75x12mm
DAIHATSU	Feroza		Check Pin. Variation possible	14	14	75x12mm
FORD	Capri	1969 to 1973		13	13	65x12mm
	Cortina			25	25	65x12mm
	Courier	1978-2006		13	13	75x12mm
	Econovan with single rear wheel	1979-2006		13	13	75x12mm
	Escort Pre 1975 Commonly known as Mk 1	1968-1975	Check Pin. Variation possible	25	25	65x12mm
	Escort Post 1975 Commonly known as Mk 2.	1975-1981	Check Pin. Variation possible	13	13	65x12mm
	Explorer			16	16	85x12mm
	Fairlane ZA, ZB, ZC, ZD, ZF, ZG, ZH, ZJ, ZK, ZL [9/1966 to 10/1987] 6 Cylinder Models			32	32	75x12mm
	Fairlane ZA, ZB, ZC, ZD, ZF, ZG, ZH, ZJ, ZK, ZL, NA, NC [9/1966 to 8/1994] 8 Cylinder Models (V8)			36	36	75x12mm
	Fairmont XR, XT, XW, XY, XA, XB, XC, VD, XE, XF Sedan 6 cyl	1966 to 1988		32	36	75x12mm
	Fairmont XR, XT, XW, XY, XA, XB, XC, XD, XE, XF Sedan 8 cyl	1966 to 1988		36	36	75x12mm
	Falcon XK, XL, XM, XP	1960-66	Check Diff Housing Size. Can be 57 or 65mm	13	13	57x12mm
	Falcon XK, XL, XM, XP	1960-66	Check Diff Housing Size. Can be 57 or 65mm	13	13	65x12mm
	Falcon XR, XT, XW, XY, XA, XB, XC, XD, XE, XF Sedan 8 cyl	1966 to 1988		36	36	75x12mm
	Falcon XR, XT, XW, XY, XA, XB, XC, XD, XE, XF Sedan 6 cyl	1966 to 1988		32	32	75x12mm
	Falcon EA, EB, ED, XG, XH Ute, Van, Wagon		On XG-XH check U-Bolts thread. We supply 14mm	32	36	75x14mm
Falcon EA, EB, ED, XG, XH Ute, Van, Wagon		If using 12mm U-Bolts	32	36	75x12mm	
Falcon EF, EL, AU, BA, BF, FG Ute, Traytop, One Tonner + Wagon		** Will not fit if 15" Standard Wheels fitted. However can be fitted if "oversized wheel" are fitted to the vehicle such as 16", 17", 18", 19" or 20". But you must measure and allow for clearance first. Refer Page 16 for further information	32	36	75x14mm	
LTD FC, FD, FE [10/1982-10/1988] 6 Cylinder Models			32	32	75x12mm	

25MM	40MM	50MM	63MM	75MM	100MM
LB1325	LB1340	LB1350	LB1363	LB1375	LB13100
LB2525	LB2540	LB2550	LB2563	LB2575	LB25100
LB1425	LB1440	LB1450	LB1463	LB1475	LB14100
LB132565	LB134065	LB135065	LB136365	LB137565	LB1310065
LB252565	LB254065	LB255065	LB256365	LB257565	LB2510065
LB1325	LB1340	LB1350	LB1363	LB1375	LB13100
LB1325	LB1340	LB1350	LB1363	LB1375	LB13100
LB252565	LB254065	LB255065	LB256365	LB257565	LB2510065
LB132565	LB134065	LB135065	LB136365	LB137565	LB1310065
LB162585	LB164085	LB165085	LB166385	LB167585	LB1610085
LB3225	LB3240	LB3250	LB3263	LB3275	LB32100
LB3625	LB3640	LB3650	LB3663	LB3675	LB36100
LB3225	LB3240	LB3250	LB3263	LB3275	LB32100
LB3625	LB3640	LB3650	LB3663	LB3675	LB36100
LB132557	LB134057	LB135057	LB136357	LB137557	NA
LB132565	LB134065	LB135065	LB136365	LB137565	LB1310065
LB3625	LB3640	LB3650	LB3663	LB3675	LB36100
LB3225	LB3240	LB3250	LB3263	LB3275	LB32100
LB323625	LB323640	LB323650	LB323663	LB323675	LB3236100
LB32362575	LB32364075	LB32365075	LB32366375	LB32367575	LB323610075
LB323625**	LB323640**				
LB3225	LB3240	LB3250	LB3263	LB3275	LB32100

MAKE	MODEL	YEAR	COMMENTS	TOP PIN	BOTTOM PIN	U BOLT
FORD	LTD FC, FD, FE (10/1982-10/1988) 8 Cylinder Models			36	36	75x12mm
	Mustang 6 Cylinder with Spring Isolator Pack	1964-70		32	32	75x12mm
	Mustang 6 Cylinder without Spring Isolator Pack	1964-70		13	13	75x12mm
	Mustang 6 Cylinder 60mm Axle Housing without Isolator Pack	1964-70		13	13	65x12mm
	Mustang 8 Cylinder with Spring Isolator Pack	1964-70		36	36	75x12mm
	Mustang 8 Cylinder without Spring Isolator Pack	1964-70		13	13	75x12mm
	Raider	1993		16	16	75x12mm
	Ranger 2wd			16	16	75x14mm
	Ranger 4wd					
HOLDEN	Colorado RC 2wd	7/2008 to 5/2012		12	12	85x14mm
	Commodore VY,VZ Ute and 1 Tonner	10/2002-8/2006	(Confirm 16mm pin. Can be 19mm in some models)	16	16	75x12mm
	Commodore Caprice, Monaro+ Statesmen	10/2002-8/2006	(Confirm 16mm pin. Can be 19mm in some models)	16	16	75x12mm
	Crewman VY, VZ 2WD and AWD	10/2002-8/2006	(Confirm 16mm pin. Can be 19mm in some models)	16	16	75x12mm
	FX, FJ, FE, FC, FB, EK, EJ, EH, HD	1953-1967		25	25	75x12mm
	HR, HK, HT, HG	1966-1971		13	13	75x12mm
	HQ, HJ, HX, HZ, WB Ute, Van + 1 Tonner	1972-1988	Sedans have Independent Rear Suspension, so cannot use Lowering Blocks.	13	13	75x12mm
	Rodeo KB, TF, R7, R9	1976 to 2002	Check Pin. Variation possible. Also Diff Housing U-Bolt Size	13	16	85x12mm
	Rodeo RA series 11/2002 to 8/2008	11/2002 to 8/2008	Check Pin. Check Diff housing, that it uses Round U-Bolts. We supply round U-Bolts.	12	12	85x14mm
ISUZU	D-Max TF 10/2008 to 5/2012	10/2008 to 5/2012	Check Pin. Check Diff housing, that it uses Round U-Bolts. We supply round U-Bolts.	12	12	85x14mm
	Rodeo KB, TF, R7, R9	1976 to 2002	Check Pin. Variation possible. Also Diff Housing U-Bolt Size	13	16	85x12mm
MAZDA	B1800			25	25	75x12mm
	B2000	1985 to 1991		13	13	75x12mm
	B2500		Check Pin. Variation possible 13mm, 16mm or 25mm	13	13	75x12mm

25MM	40MM	50MM	63MM	75MM	100MM
LB3625	LB3640	LB3650	LB3663	LB3675	LB36100
LB3225	LB3240	LB3250	LB3263	LB3275	LB32100
LB1325	LB1340	LB1350	LB1363	LB1375	LB13100
LB132565	LB134065	LB135065	LB136365	LB137565	LB1310065
LB3625	LB3640	LB3650	LB3663	LB3675	LB36100
LB1325	LB1340	LB1350	LB1363	LB1375	LB13100
LB1625	LB1640	LB1650	LB1663	LB1675	LB16100
LB162575	LB164075	LB165075	LB166375	LB167575	LB1610075
N/A	N/A	N/A	N/A	N/A	N/A
LB122585	LB124085	LB125085	LB126385	LB127585	LB1210085
LB1625	LB1640	LB1650	LB1663	LB1675	LB16100
LB1625	LB1640	LB1650	LB1663	LB1675	LB16100
LB1625	LB1640	LB1650	LB1663	LB1675	LB16100
LB2525	LB2540	LB2550	LB2563	LB2575	LB25100
LB1325	LB1340	LB1350	LB1363	LB1375	LB13100
LB1325	LB1340	LB1350	LB1363	LB1375	LB13100
LB13162585	LB13164085	LB13165085	LB13166385 Note A	LB13167585 Note A	LB131610085 Note A
LB122585	LB124085	LB125085	LB126385 Note A	LB127585 Note A	LB1210085 Note A
LB122585	LB124085	LB125085	LB126385 Note A	LB127585 Note A	LB1210085 Note A
LB13162585	LB13164085	LB13165085	LB13166385	LB13167585	LB131610085
LB2525	LB2540	LB2550	LB2563	LB2575	LB25100
LB1325	LB1340	LB1350	LB1363	LB1375	LB13100
LB1325	LB1340	LB1350	LB1363	LB1375	LB13100

Note A: Please check clearance as suspension parts may hit fuel tank

MAKE	MODEL	YEAR	COMMENTS	TOP PIN	BOTTOM PIN	U BOLT
MAZDA	B2500		Check Pin. Variation possible 13mm, 16mm or 25mm	16	16	75x12mm
	B2500		Check Pin. Variation possible 13mm, 16mm or 25mm	25	25	75x12mm
	B2600		Check Pin. Variation possible 13mm, 16mm or 25mm	13	13	75x12mm
	B2600		Check Pin. Variation possible 13mm, 16mm or 25mm	16	16	75x12mm
	B2600		Check Pin. Variation possible 13mm, 16mm or 25mm	25	25	75x12mm
	E1600		Some Models will require diff plates to be drill out from 10mm to 12mm	13	13	75x12mm
	E2000		Some Models will require diff plates to be drill out from 10mm to 12mm	13	13	75x12mm
	Bravo		Check Pin. Variation possible	13	13	85x12mm
	BT50 2wd (Same as Ford Ranger)			16	16	75x14mm
	BT50 4wd (Same as Ford Ranger)					
	RX9		Check Pin. Variation possible	25	25	75x12mm
	Sedans-Most models		Check Pin. Variation possible	25	25	75x12mm
MITSUBISHI	Challenger PA 4WD	1998 to 2007		13	13	85x12mm
	Lancer LA, LB	1974-1980	Check Pin. Variation possible 13mm or 25mm	13	13	75x12mm
	Lancer LC	1980-1984	Check Pin. Variation possible 13mm or 25mm	25	25	75x12mm
	L300 SA, SB, SC, SD, SE	1981 on		14	14	75x12mm
	Sigma			25	25	75x12mm
	Starwagon L300 SB, SC, SD, SE	1981 on		14	14	75x12mm
	Triton 2WD ME, MF, MG, MH, MJ, MK	10/1987 to 12/2006	Check Pin. Check Diff housing, that it uses Round U-Bolts. We supply round U-Bolts.	13	13	85x12mm
	Triton 2WDML, MIN	3/2006 to 2015	Check Pin. Check Diff housing, that it uses Round U-Bolts. We supply round U-Bolts.	14	14	75x12mm

25MM	40MM	50MM	63MM	75MM	100MM
LB1625	LB1640	LB1650	LB1663	LB1675	LB16100
LB2525	LB2540	LB2550	LB2563	LB2575	LB25100
LB1325	LB1340	LB1350	LB1363	LB1375	LB13100
LB1625	LB1640	LB1650	LB1663	LB1675	LB16100
LB2525	LB2540	LB2550	LB2563	LB2575	LB25100
LB1325	LB1340	LB1350	LB1363	LB1375	LB13100
LB1325	LB1340	LB1350	LB1363	LB1375	LB13100
LB132585	LB134085	LB135085	LB136385	LB137585	LB1310085
LB162575	LB164075	LB165075	LB166375	LB167575	LB1610075
N/A	N/A	N/A	N/A	N/A	N/A
LB2525	LB2540	LB2550	LB2563	LB2575	LB25100
LB2525	LB2540	LB2550	LB2563	LB2575	LB25100
LB132585	LB134085	LB135085	LB136385	LB137585	LB1310085
LB1325	LB1340	LB1350	LB1363	LB1375	LB13100
LB2525	LB2540	LB2550	LB2563	LB2575	LB25100
LB1425	LB1440	LB1450	LB1463	LB1475	LB14100
LB2525	LB2540	LB2550	LB2563	LB2575	LB25100
LB1425	LB1440	LB1450	LB1463	LB1475	LB14100
LB132585	LB134085	LB135085	LB136385	LB137585	LB1310085
LB1425	LB1440	LB1450	LB1463	LB1475	LB14100

MAKE	MODEL	YEAR	COMMENTS	TOP PIN	BOTTOM PIN	U BOLT
NISSAN	1200			13	16	65x12mm
	120Y			13	16	65x12mm
	180B Sedan	1972 to 1977		13	13	75x12mm
	180B Wagon	1972 to 1977	Measure Diff Housing for U-Bolt size	13	13	65x12mm
	200B Sedan	1977 to 1981		13	13	75x12mm
	200B Wagon	1977 to 1981	Measure Diff Housing for U-Bolt size	13	13	65x12mm
	620 Ute		Measure Diff Housing for U-Bolt size	13	16	75x12mm
	720 Ute		Measure Diff Housing for U-Bolt size	13	16	75x12mm
	Bluebird Wagon			25	25	65x12mm
	Navara D21, D22 2wd	1986 to 2015	Check Diff housing, that it uses Round U-Bolts. We supply round 85mm U-Bolts.	13	16	85x12mm
	Urvan			14	14	75x12mm
	Vanette			21	21	75x12mm
	XFN Ute	1984 to 1991		32	36	75x12mm
TOYOTA	Hiace, Hilux, Liteace, Toyace with 14mm Pin Size	Must check pin size	Check Pin. Variation possible	14	14	75x12mm
	Hiace, Hilux, Liteace, Toyace with 16mm Pin Size	Must check pin size	Check Pin. Variation possible	16	16	75x12mm
	Hiace, Hilux, Liteace, Toyace with 19mm Pin Size	Must check pin size	Check Pin. Variation possible	19	19	75x12mm
	Hiace, Hilux, Liteace, Toyace with 21mm Pin Size	Must check pin size	Check Pin. Variation possible	21	21	75x12mm
	Corolla, Corona, Crown with Borg Warner Diff (Identified by removable rear cover plate)			25	25	65x12mm
	Corolla, Corona, Crown with Toyota Diff (This diff has no removable rear cover plate)			13	13	65x12mm
VALIANT	SV1, AP5, AP6, VC, VE, VF, VG, VH, VJ, VK, CL, CM	1962-1981		13	13	75x12mm

25MM	40MM	50MM	63MM	75MM	100MM
LB13162565	LB13164065	LB13165065	LB13166365	LB13167565	LB131610065
LB13162565	LB13164065	LB13165065	LB13166365	LB13167565	LB131610065
LB1325	LB1340	LB1350	LB1363	LB1375	LB13100
LB13162565	LB13164065	LB13165065	LB13166365	LB13167565	LB131610065
LB1325	LB1340	LB1350	LB1363	LB1375	LB13100
LB13162565	LB13164065	LB13165065	LB13166365	LB13167565	LB131610065
LB131625	LB131640	LB131650	LB131663	LB131675	LB1316100
LB131625	LB131640	LB131650	LB131663	LB131675	LB1316100
LB252565	LB254065	LB255065	LB256365	LB257565	LB2510065
LB13162585	LB13164085	LB13165085	LB13166385	LB13167585	LB131610085
LB1425	LB1440	LB1450	LB1463	LB1475	LB14100
LB2125	LB2140	LB2150	LB2163	LB2175	LB21100
LB3225	LB3240	LB3250	LB3263	LB3275	LB32100
LB1425	LB1440	LB1450	LB1463	LB1475	LB14100
LB1625	LB1640	LB1650	LB1663	LB1675	LB16100
LB1925	LB1940	LB1950	LB1963	LB1975	LB19100
LB2125	LB2140	LB2150	LB2163	LB2175	LB21100
LB252565	LB254065	LB255065	LB256365	LB257565	LB2510065
LB132565	LB134065	LB135065	LB136365	LB137565	LB1310065
LB1325	LB1340	LB1350	LB1363	LB1375	LB13100

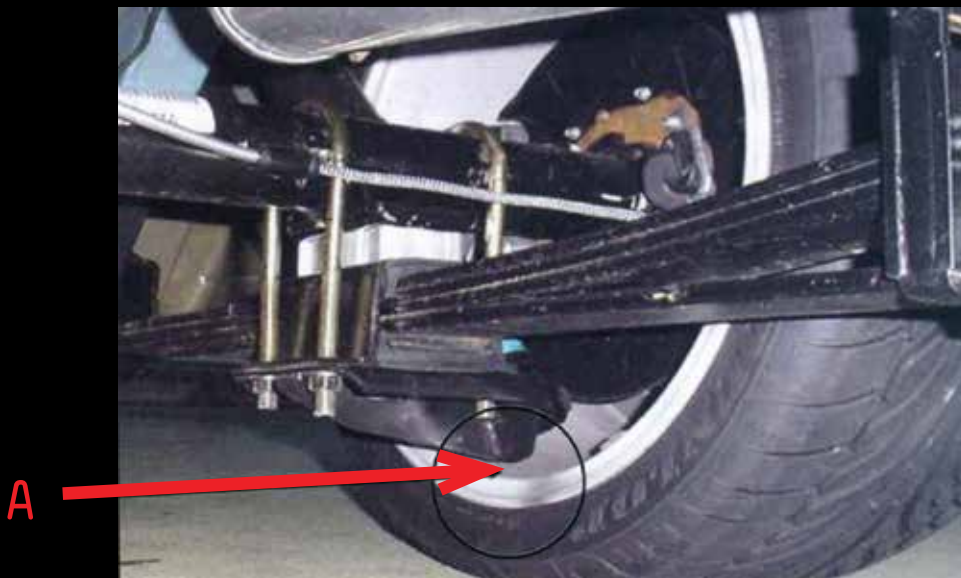
AU / BA Utes / Table Tops

with standard 15" wheels cannot be fitted with lowering blocks

However 1" upward in size lowering blocks can be fitted if over-size wheels are fitted to the car e.g. 16", 17", 18", 19" or 20" wheels. **BUT** you must measure size at point (A) and allow a clearance factor if you need to replace the spare tire because of a flat.

You cannot put a 15" wheel on the rear. You will have to rotate the front rim to back and the spare to the front, unless the spare is the same size as the other 4 wheels fitted.

As you can see, any lowering is controlled by the clearance of shock absorber's plate to the inside of the road wheel if there is not enough space the shock absorber plate will rub against the inside of the road wheel.



Part Number Cross Reference

SPECIALTY PART NO	TFI PART NO
LBF100C	LB3236100
LBF125C	NA
LBF25C	LB323625
LBF38C	LB323640
LBF50C	LB323650
LBF6100	LB32100
LBF6125	NA
LBF625	LB3225
LBF638	LB3240
LBF63865	LB324065
LBF63C	LB323663
LBF650	LB3250
LBF65065	LB325065
LBF663	LB3263
LBF675	LB3275
LBF75C	LB323675
LBF8100	LB36100
LBF8125	NA
LBF825	LB3625
LBF838	LB3640
LBF850	LB3650
LBF863	LB3663
LBF875	LB3675
LBHE100	LB25100
LBHE10065	LB2510065
LBHE125	NA
LBHE12565	NA
LBHE25	LB2525
LBHE25	LB2550
LBHE2565	LB252565
LBHE2565	LB255065
LBHE38	LB2540
LBHE3865	LB254065
LBHE63	LB2563
LBHE6365	LB256365
LBHE75	LB2575
LBHE7565	LB257565
LBHL100	LB13100
LBHL10065	LB1310065
LBHL10085	LB1310085

SPECIALTY PART NO	TFI PART NO
LBHL125	NA
LBHL25	LB1325
LBHL2565	LB132565
LBHL2585	LB132585
LBHL38	LB1340
LBHL3857	LB134057
LBHL3865	LB134065
LBHL3885	LB134085
LBHL50	LB1350
LBHL5057	LB135057
LBHL5065	LB135065
LBHL5085	LB135085
LBHL63	LB1363
LBHL6365	LB136365
LBHL6385	LB136385
LBHL75	LB1375
LBHL7557	LB137557
LBHL7565	LB137565
LBHL7585	LB137585
LBHR010085X14	LB1210085
LBHR02585X14	LB122585
LBHR03885X14	LB124085
LBHR05085X14	LB125085
LBHR06385X14	LB126385
LBHR07585X14	LB127585
LBMAE3865	NA
LBMAE5065	NA
LBMAE6365	NA
LBMAE7565	NA
LBMIT100	LB14100
LBMIT125	NA
LBMIT25	LB1425
LBMIT38	LB1440
LBMIT50	LB1450
LBMIT5085	LB145085
LBMIT63	LB1463
LBMIT75	LB1475
LBMIT7585	LB147585
LBNIS100	LB1316100
LBNIS10065	LB131610065

Part Number Cross Reference

SPECIALTY PART NO	TFI PART NO
LBNIS10085	LB131610085
LBNIS125	NA
LBNIS12585	NA
LBNIS25	LB131625
LBNIS2565	LB13162565
LBNIS2585	LB13162585
LBNIS38	LB131640
LBNIS3865	LB13164065
LBNIS3885	LB13164085
LBNIS50	LB131650
LBNIS5065	LB13165065
LBNIS5085	LB13165085
LBNIS63	LB131663
LBNIS6365	LB13166365
LBNIS6385	LB13166385
LBNIS75	LB131675
LBNIS7565	LB13167565
LBNIS7585	LB13167585
LBT0Y100	LB19100
LBT0Y100C	LB16100
LBT0Y100C85	LB1610085
LBT0Y100CHD	LB1610075
LBT0Y100CL	LB21100
LBT0Y125	NA
LBT0Y125C	NA
LBT0Y25	LB1925
LBT0Y2557	LB192557
LBT0Y25C	LB1625

SPECIALTY PART NO	TFI PART NO
LBT0Y25C85	LB162585
LBT0Y25CHD	LB162575
LBT0Y25CL	LB2125
LBT0Y38	LB1940
LBT0Y3857	LB194057
LBT0Y38C	LB1640
LBT0Y38C85	LB163885
LBT0Y38CHD	LB163875
LBT0Y38CL	LB2140
LBT0Y4065	LB194065
LBT0Y50	LB1950
LBT0Y5057	LB195057
LBT0Y5065	LB195065
LBT0Y50C	LB1650
LBT0Y50C85	LB165085
LBT0Y50CHD	LB165075
LBT0Y50CL	LB2150
LBT0Y63	LB1963
LBT0Y6365	LB196365
LBT0Y63C	LB1663
LBT0Y63C85	LB166385
LBT0Y63CHD	LB166375
LBT0Y63CL	LB2163
LBT0Y75	LB1975
LBT0Y75C	LB1675
LBT0Y75C85	LB167585
LBT0Y75CHD	LB167575
LBT0Y75CL	LB2175

Part Number Cross Reference

NOLATHANE PART NO	SPECIALTY PART NO	TFI PART NO
46960	LBNIS63	LB131663
47910	LBHE38	LB2540
47911	LBHE50	LB2550
47920	LBHL38	LB1340
47920	LBHL50	LB1350
47922	LBHL63	LB1363
47923	LBHL6385	LB136385
47924	LBMIT38	LB1440
47925	LBMIT50	LB1450
47926	LBMIT63	LB1463
47927	LBHL3885	LB134085
47928	LBHL5085	LB135085
47930	LBF638	LB3240
47931	LBF650	LB3250
47940	LBF838	LB3640
47941	LBF850	LB3650
47942	LBF863	LB3663
47950	LBF38C	LB323640
47951	LBF50C	LB323650
47952	LBF25C	LB323625
47961	LBNIS6385	LB13166385
47962	LBHRO3885	LB124085
47963	LBHRO5085	LB125085
47964	LBNIS3885	LB13164085
47965	LBNIS5085	LB13165085
47970	LBTOY63	LB1963
47980	LBTOY38C	LB1640
47981	LBTOY50C	LB1650
47982	LBTOY63C	LB1663
47983	LBTOY38	LB1940
47984	LBTOY50	LB1950
47990	LBHRO6385	LB126385



National Auto Parts Depot Pty Ltd
20 Production Drive
Campbellfield, Victoria 3061
Australia

Phone: (03) 9357 6100
Fax: (03) 9357 0531

www.naparts.com.au